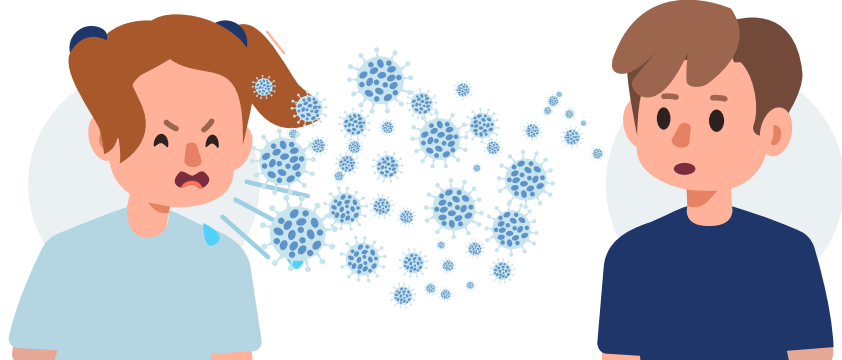
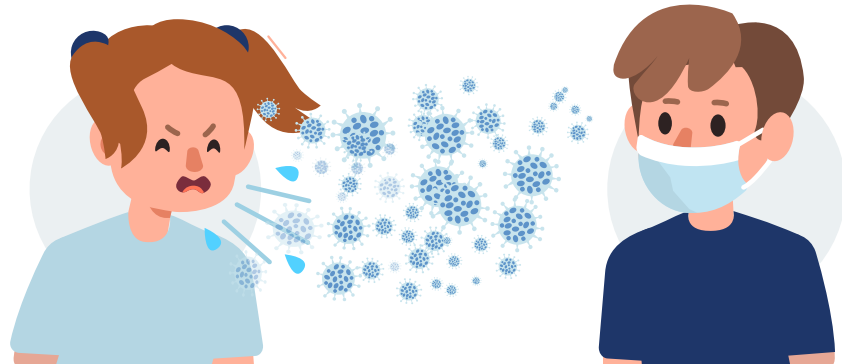




# HOW PROPER USE OF A FACEMASK CAN REDUCE THE SPREAD OF COVID-19



**VERY HIGH  
RISK OF  
INFECTION**



**HIGH  
RISK OF  
INFECTION**



**MEDIUM  
RISK OF  
INFECTION**



**LOW  
RISK OF  
INFECTION**

**Social distancing precautions should still be followed along with routine hand-washing. Save lives. Stay home.**

f t i y FOR LATEST INFORMATION VISIT

**WWW.HCPHTX.ORG**